

# CERTIFICATE OF LOCATION OF GOVERNMENT CORNER

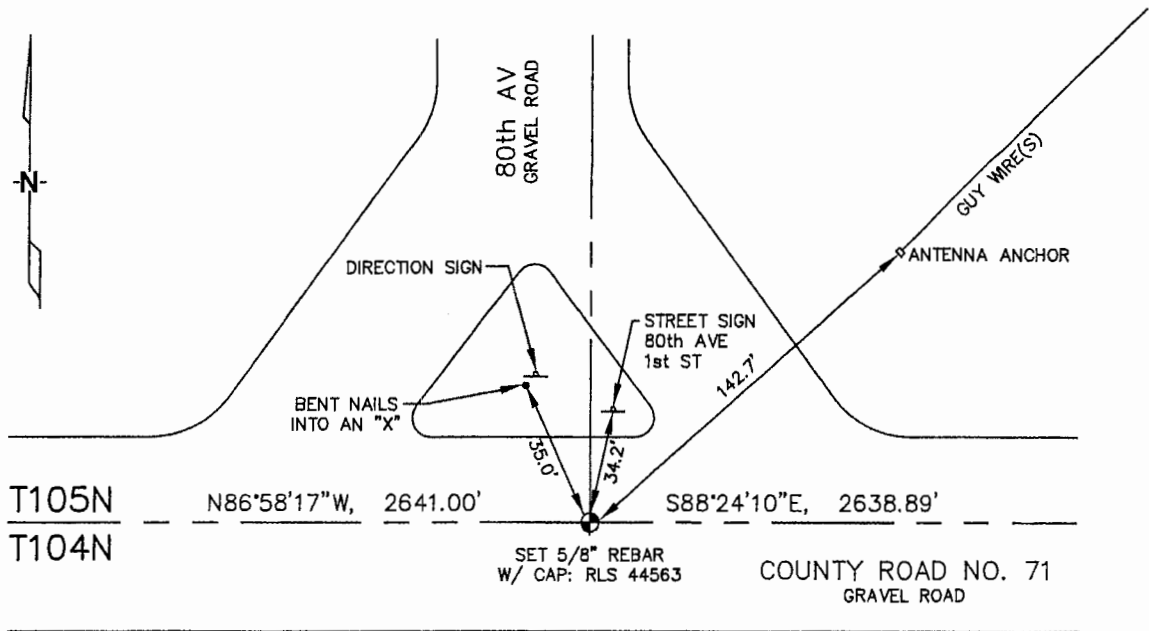
SOUTHWEST Corner of Section 33, Township 105, Range 42, 5TH P.M.

STATE OF MINNESOTA, County of MURRAY

At the corner location shown on the sketch :

- On \_\_\_\_\_ found \_\_\_\_\_
- left monument as found,  lowered monument,  removed monument (explain)
- On 2/23/2006 set A 5/8" REBAR WITH CAP: RLS 44563, SOUTH FROM TRAFFIC ISLAND AREA.

### Sketch of reference ties



N: 643,287.62  
 E: 2,122,376.19  
 MN SOUTH, NAD 83  
 NOT TO SCALE

Statement of evidence relative to this corner location is on back page

I hereby certify that this document and the data contained herein was prepared by me or under my direct supervision.

\_\_\_\_\_  
 Thomas V. Zeff  
 Registration No. 44563  
 Date 7/03/06

- Land Surveyor,  Professional Engineer
- County Surveyor,  County Engineer

OFFICE OF THE COUNTY RECORDER  
County of \_\_\_\_\_

SEP 28 2006

I hereby certify that this document was filed in the Co. Recorders office at \_\_\_\_\_ .M. on the day of \_\_\_\_\_ A.D. , 20

County Recorder James V. Johnson  
 By \_\_\_\_\_, Deputy

DOCUMENT NO. \_\_\_\_\_

STATEMENT OF EVIDENCE:

SOUTHWEST CORNER, SECTION 33, T. 105 N., R. 42 W.,  
MURRAY COUNTY, MINNESOTA

- 1858 W.J. Liely, US. Deputy Surveyor, monumented south township line.
- ? Date Murray Co., placed a concrete monument on corner.  
Ties: S-31.8' to edge of steel fence post;  
SE-40.5' to edge of steel fence post.
- ? Date Murray Co., located concrete monument, 2" below grade.  
Ties: SW-43.8' nail & cap on power pole;  
SE-40.5' to steel fence post;  
S-31.8' to steel fence post.
- 2/23/2006 Ulteig Engineers, Inc., Survey Crew, Brian Payne Party Chief,  
found nothing. Set a 5/8" rebar with cap: RLS 44563 in gravel road,  
south from the traffic island area.  
Ties: NW-35.0' to nailed "X" on post, next to "Direction Sign";  
N-34.2' to "Street Sign" post;  
NE-142.7' to antenna anchor;  
E-2638.89' to S 1/4 corner, Section 33;  
W-2641.00' to S 1/4 corner, Section 32.